

INSACOG BULLETIN

17th April, 2023

The INSACOG reports genomic surveillance of SARS-CoV-2 by whole genome sequencing of samples from sentinel sites across the country and international passengers arriving in India. A summary of the cumulative data of INSACOG and other state sequencing initiatives can be found in the INSACOG data portal along with other INSACOG related information at <https://ibdc.rcb.res.in/>

INSACOG:

Total number of samples sequenced is 278,987

Samples sequenced by IGSLs under State government MoUs: 34,763

Total number of samples sequenced: 313,750

The number of samples with pangolin lineages assigned are given below:

Table 1: Cumulative samples with pangolin lineage assigned (as on 14.04.2023)

Community sample	Travelers sample	Total pangolin lineage assigned	Total VOC/VOI	Percentage
194367	12505	206872	171401	82.9

Cumulative distribution of lineages (as on 14-04-2023)

Alpha Variant			Beta Variant			Gamma Variant			Delta Variant			B.1.617.1 and B.1.617.3			AY Series			Omicron*		
Tr&Co	Com	Total	Tr&Co	Com	Total	Tr&Co	Com	Total	Tr&Co	Com	Total	Tr&Co	Com	Total	Tr&Co	Com	Total	Tr&Co	Com*	Total
577	3692	4269	117	105	222	1	2	3	442	44217	44659	84	5540	5624	270	20357	20627	6284	84522	91129

Tr&Co= Travelers and contacts; Com= Community samples

Cumulative distribution of lineages (as on 14-04-2023)

Recombinant																												Total	XE Variant	XM Variant	XR Variant	XT Variant	XU Variant	XV Variant	XG Variant	Total VOC/VOCs																		
XAR	XAH	XAB	XAG	XAM	XAW	XBB	XBB.1	XBB.1.1	XBB.1.2	XBB.1.3	XBB.1.4	XBB.1.5	XBB.1.6	XBB.1.7	XBB.1.8	XBB.1.9	XBB.1.10	XBB.1.11	XBB.1.12	XBB.1.13	XBB.1.14	XBB.1.15	XBB.1.16	XBB.1.17	XBB.1.18	XBB.1.19	XBB.1.20										XBB.1.21	XBB.1.22	XBB.2	XBB.2.1	XBB.2.2	XBB.2.3	XBB.2.4	XBB.3	XBB.3.1	XBB.4	XBB.5	XBC	XBC.1	XBD	XBF	XBP	XBL	OTHER S
4	1	2	2	1	1	876	947	4	3	8	2	302	1	1	2	2	1	1	2	1	17	47	15	2	2	1343	74	1	577	1	316	11	45	437	5	25	83	1	1	6	7	1	5	146	46	5378	1	2	0	0	10	1	2	17192
TrdCo=Travelers and contacts; Com=Community samples																																																						

Tr&Co= Travelers and contacts; Com= Community samples

INSACOG BULLETIN

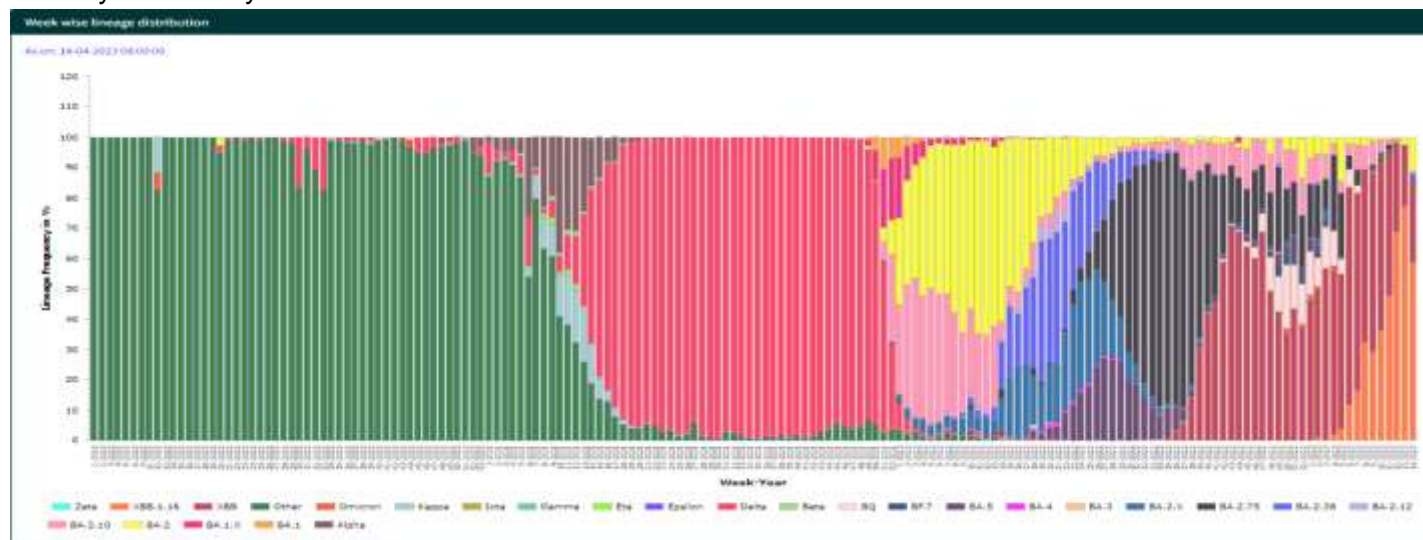
Global Scenario

Globally, nearly 3.0 million new cases and 25000 deaths have been reported in the last 28 days^[1]. During the week 12 of the year 2023, there has been a continued increasing trend in the proportions of recombinant lineages globally. Contrary to the overall trend, important increases in reported cases and deaths were seen in the South-East Asia and Eastern Mediterranean regions. Currently, there is one variant of interest (VOI), XBB.1.5, and seven variants under monitoring (VUMs). The VUMs are BQ.1, BA.2.75, CH.1.1, BQ.1, XBB, XBF and XBB.1.16. Globally, XBB.1.5 (VOI) has been detected in 95 countries and continues to be the most prevalent variant. XBB.1.16 and XBB.1.9.1 have the same spike mutation profile as XBB.1.5 (E180V and F486P); and additional mutations in the open reading frame regions. However, so far reports do not indicate a rise in hospitalizations, ICU admissions, or deaths due to XBB.1.16.

Indian Scenario

Omicron and its sub-lineages continue to be the dominant variants in India. There is a continuous increase in infection rate has been observed. XBB.1.16 has been observed in different parts of India, accounting for 58.6% of the infection till date. Among the samples collected till the first week of April 2023, other XBB sub-lineages accounted for 25.9% of the current infection. A few BA.2.10 sub-lineage was detected in some part of India, whereas XBB was the most prevalent sub-lineage of omicron variant. Since the number of samples were relatively low in some part of India, the graphical representation should be considered in that perspective too. However, no increase in disease severity or hospitalization has been observed.

Country wide analysis:

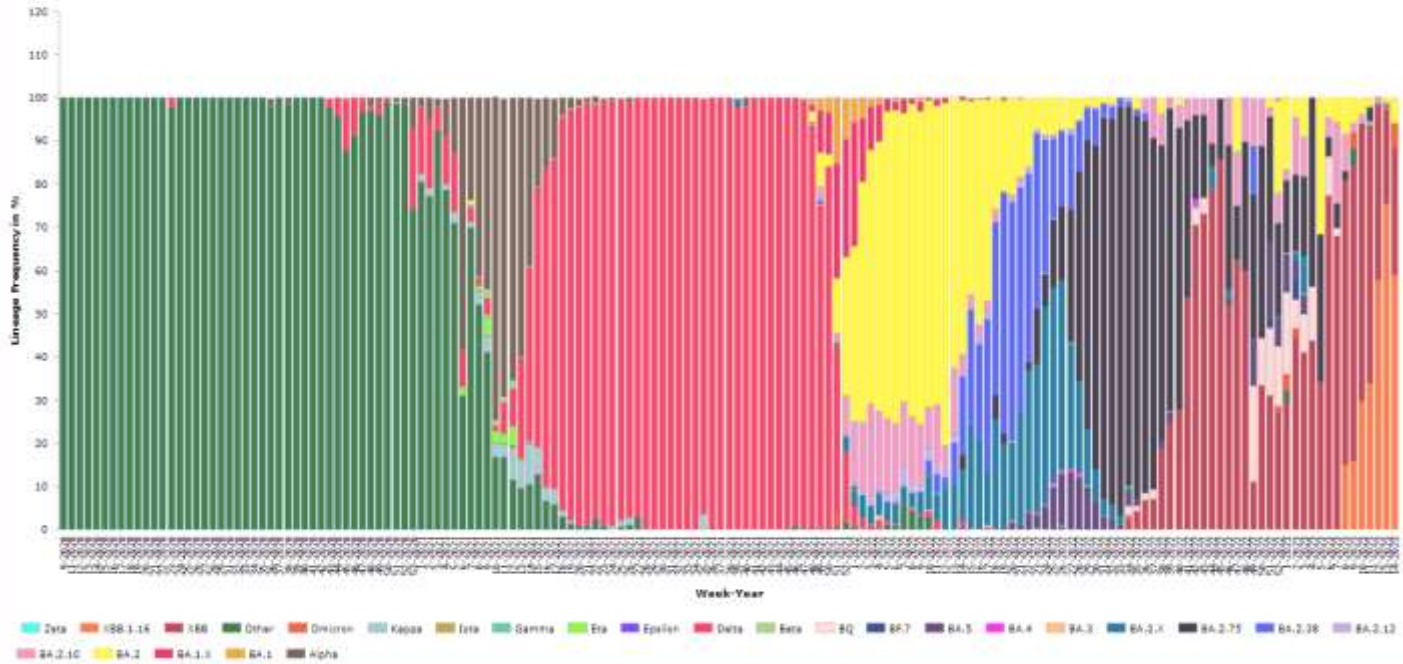


Region-wise analysis:

INSACOG BULLETIN

North India - Week wise lineage distribution

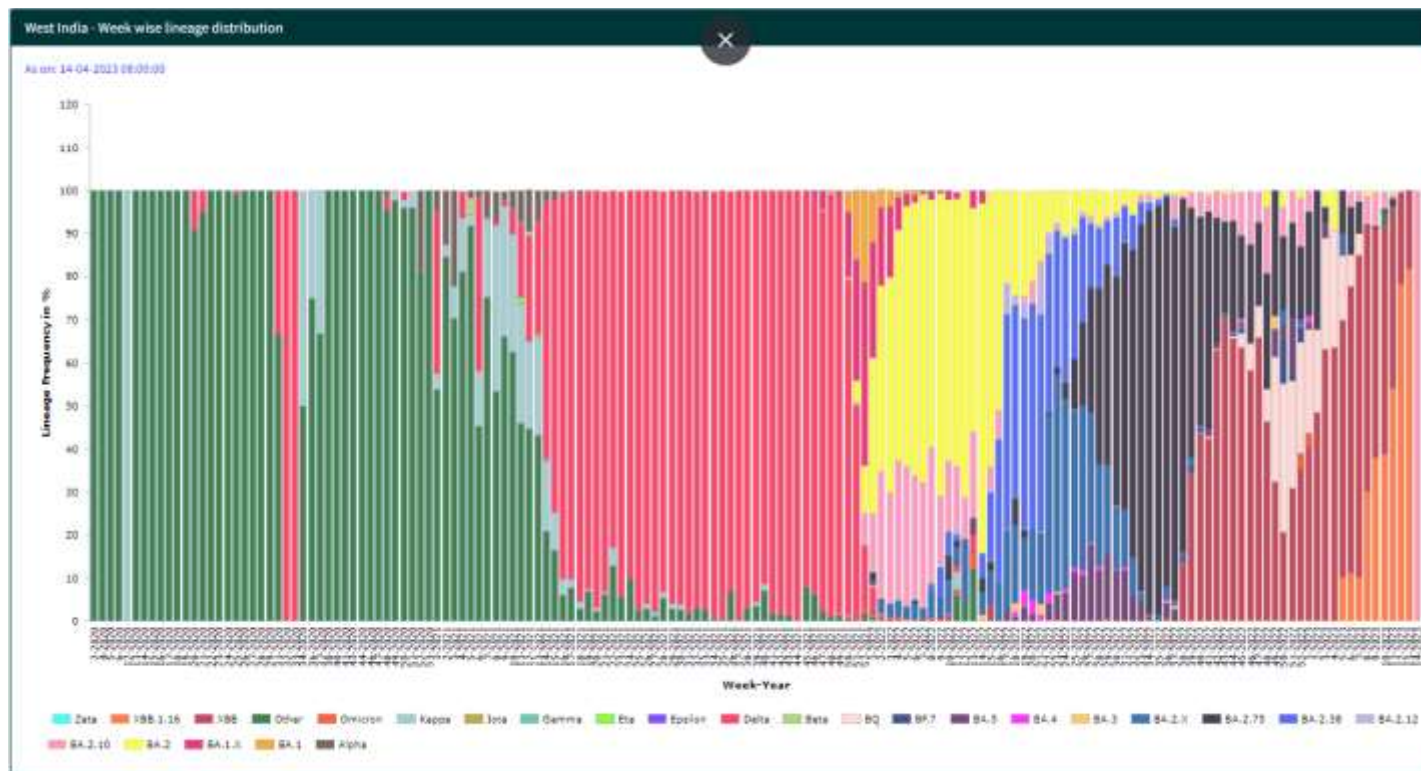
As on: 14-04-2023 08:00:00



East India - Week wise lineage distribution

As on: 14-04-2023 08:00:00

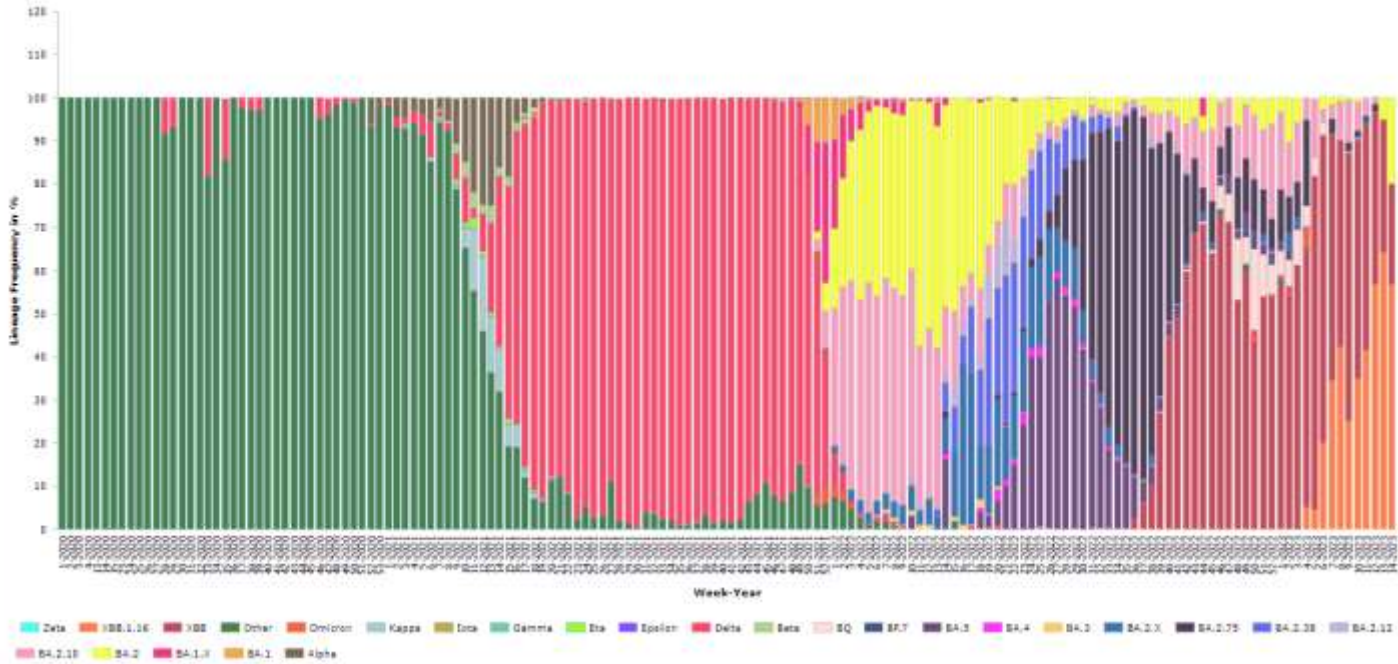




INSACOG BULLETIN

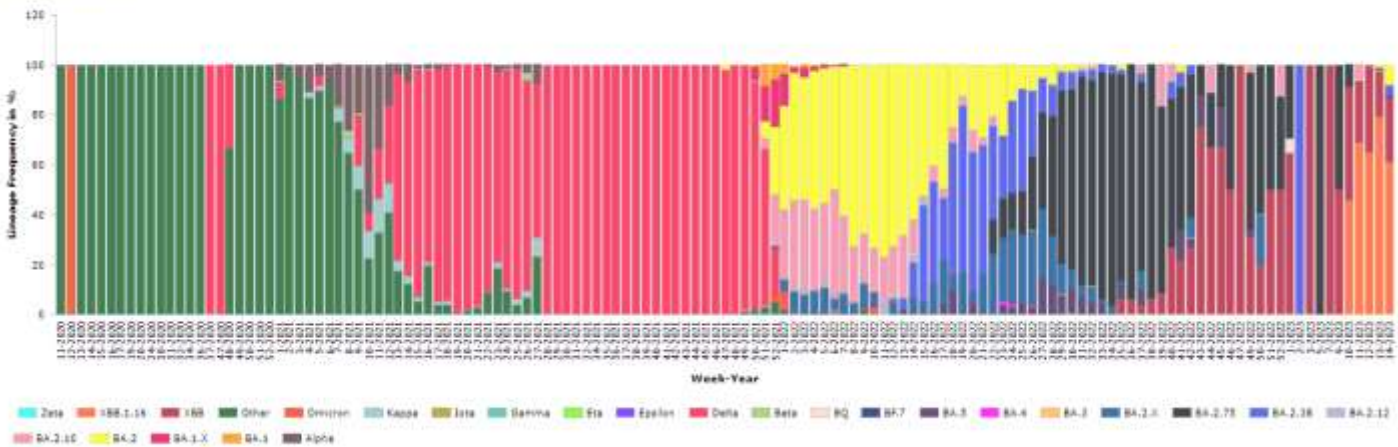
South India - Week wise lineage distribution

As on: 14-04-2023 08:00:00



Central India - Week wise lineage distribution

As on: 14-04-2023 08:00:00



Reference:

1. WHO weekly epidemiological report.