

INSACOG BULLETIN

5 September, 2022

The INSACOG reports genomic surveillance of SARS-CoV-2 by whole genome sequencing of samples from sentinel sites across the country and international passengers arriving in India. A summary of the cumulative data of INSACOG and other state sequencing initiatives can be found in the INSACOG data portal along with other INSACOG related information at <https://ibdc.rcb.res.in/>

INSACOG:

- Total number of samples sequenced is 249,199

Samples sequenced by IGSLs under State government MoUs: 34,763

Total number of samples sequenced: 283,962

The number of samples with pangolin lineages assigned are given below:

Table 1: Cumulative samples with pangolin lineage assigned (as on 02.09.2022)				
Community sample	Travelers sample	Total pangolin lineage assigned	Total VOC/VOI	Percentage
174183	12285	186468	152327	81.7

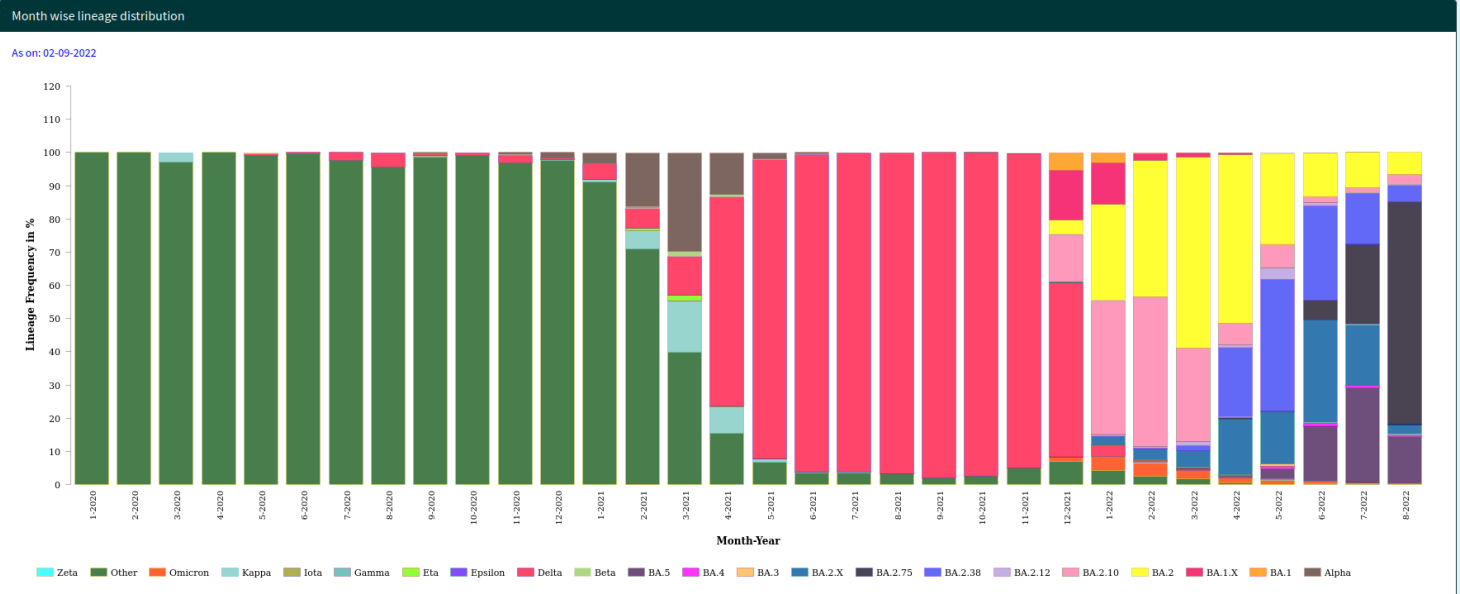
INSACOG BULLETIN

Global Scenario

Globally, the number of new weekly cases decreased by 16% during the last week as compared to the previous week. The number of new weekly deaths decreased by 13%, as compared to the previous week. The Omicron variant of concern (VOC) is the most abundant variant circulating worldwide, accounting for 99.6% of sequences reported globally. BA.5 Omicron descendent lineages continue to be dominant globally, with an increase in weekly prevalence from 72.4% to 78.2%. The prevalence of BA.2 descendent lineages (BA.2.X) remained stable last week. BA.2.75, an Omicron descendent lineage under monitoring, still shows a relatively low prevalence globally, but a number of countries have observed recent increasing trends.

Indian Scenario

The SARS-CoV-2 infection rate has declined all over India. Omicron and its sub-lineages continue to be the dominant variant in India. BA.2.75 is the dominant lineage, followed by BA.2.38 with a declining trend since the previous week. BA.5, BA.2.X and BA.2 are also in circulation but in small proportions. India has crossed more than 200 crore vaccinations which might have significant effect in reducing the infection rate in India.



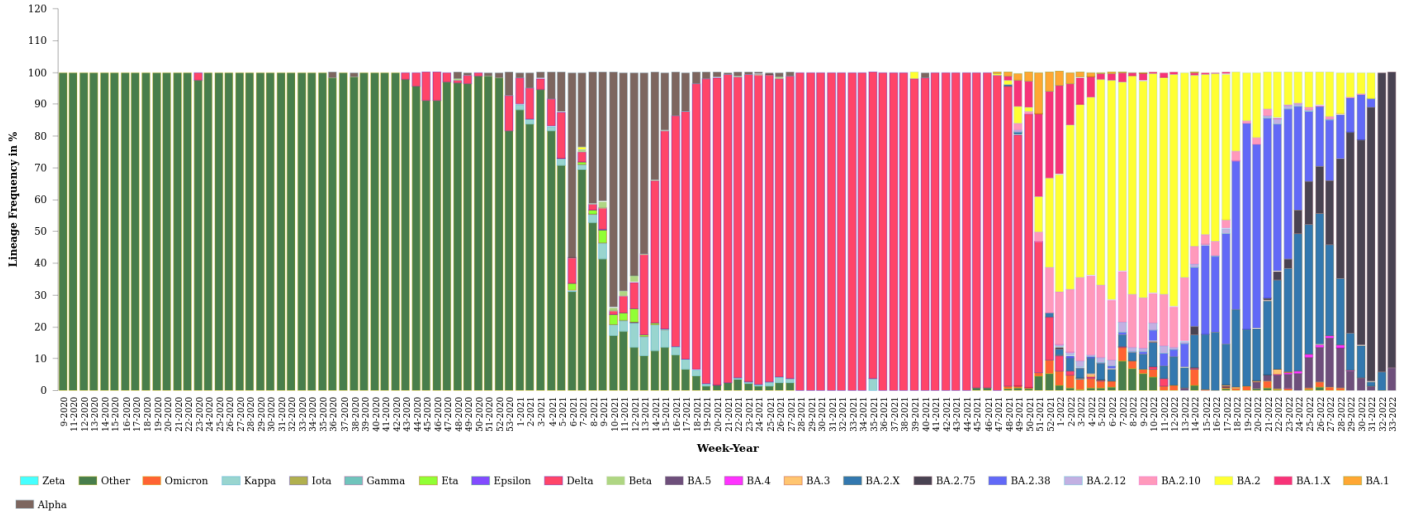
*BA.5 in the graph includes its sub-lineages also.

INSACOG BULLETIN

The region-wise analysis is depicted below:

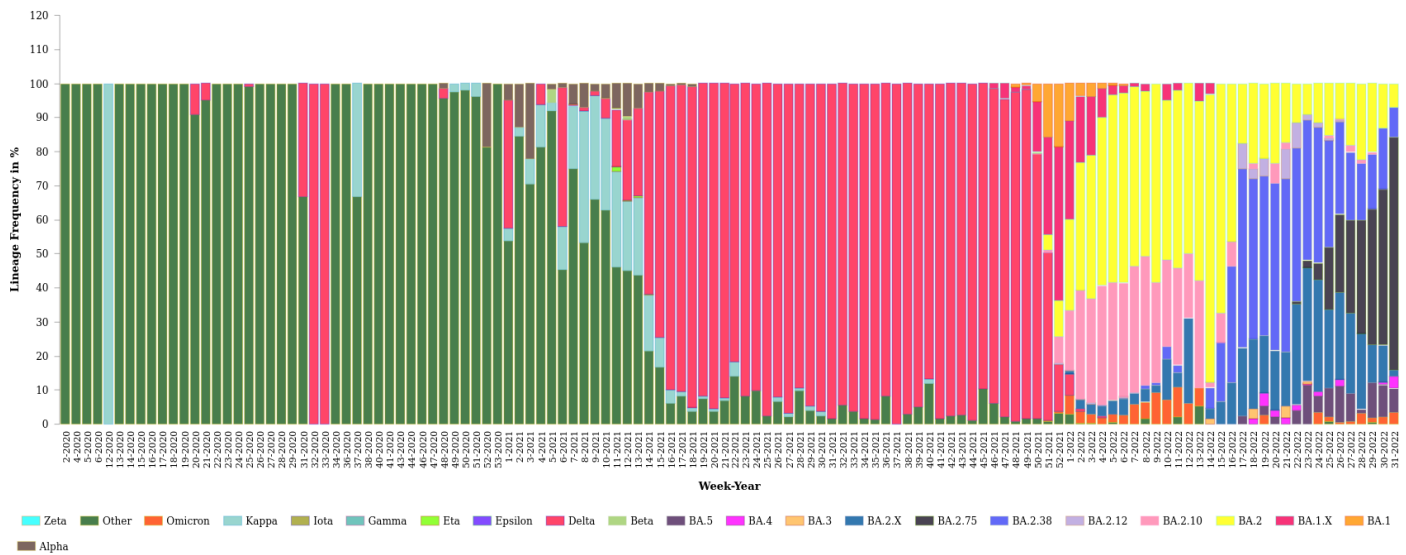
North India - Week wise lineage distribution

As on: 02-09-2022



West India - Week wise lineage distribution

As on: 02-09-2022

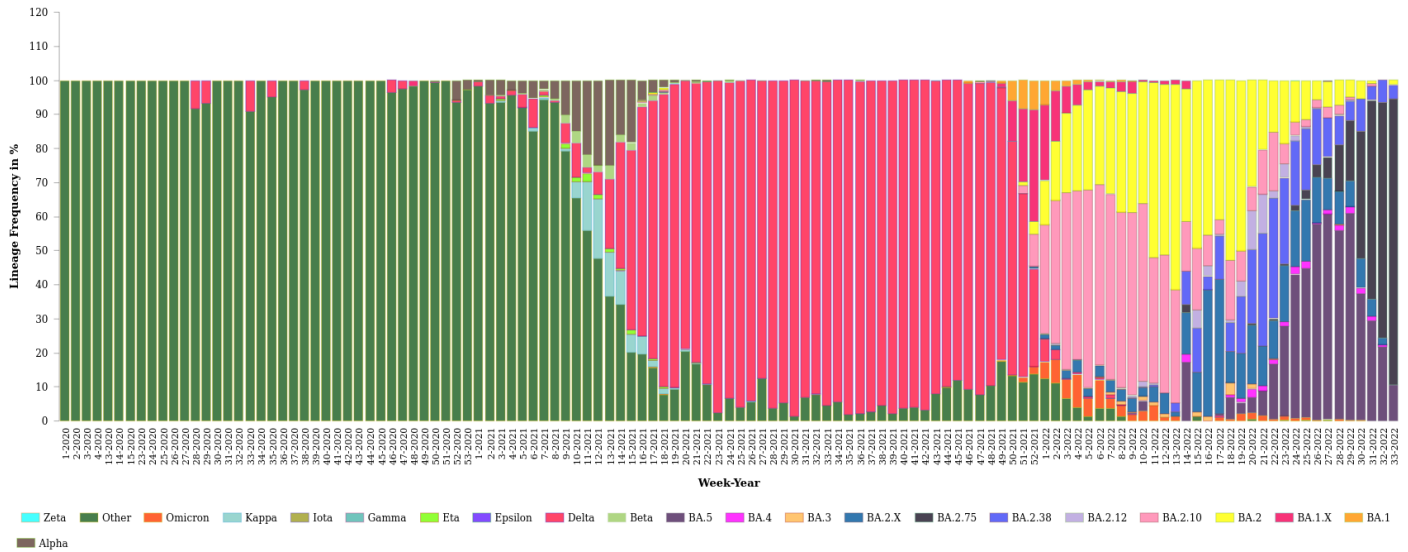


*BA.5 in the graph includes its sub-lineages also.

INSACOG BULLETIN

South India - Week wise lineage distribution

As on: 02-09-2022



NorthEast India - Week wise lineage distribution

As on: 02-09-2022

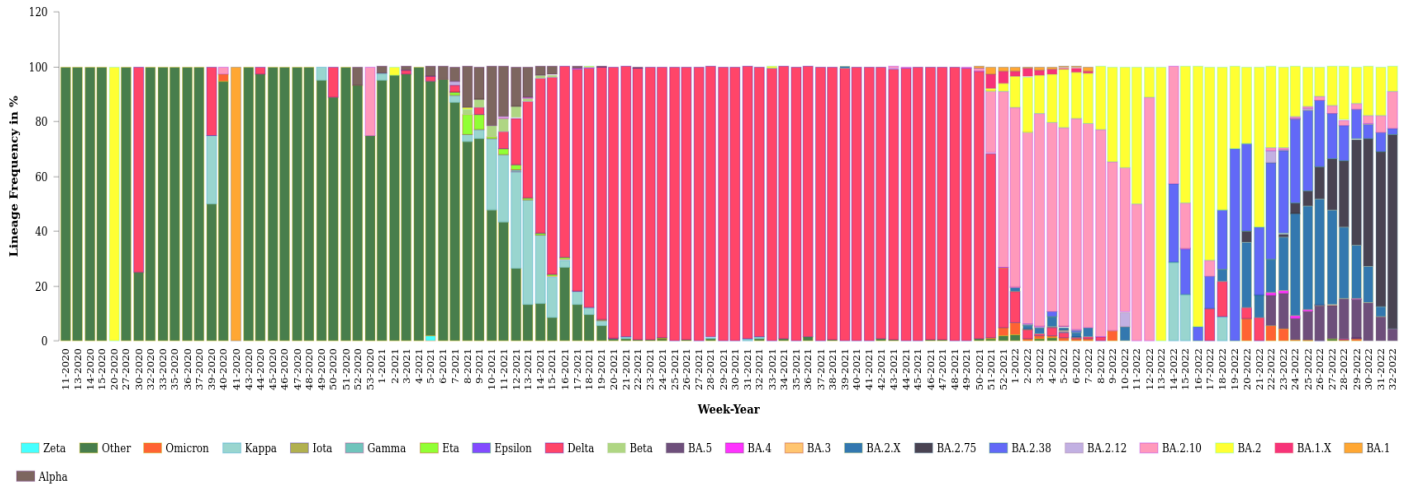


*BA.5 in the graph includes its sub-lineages also.

INSACOG BULLETIN

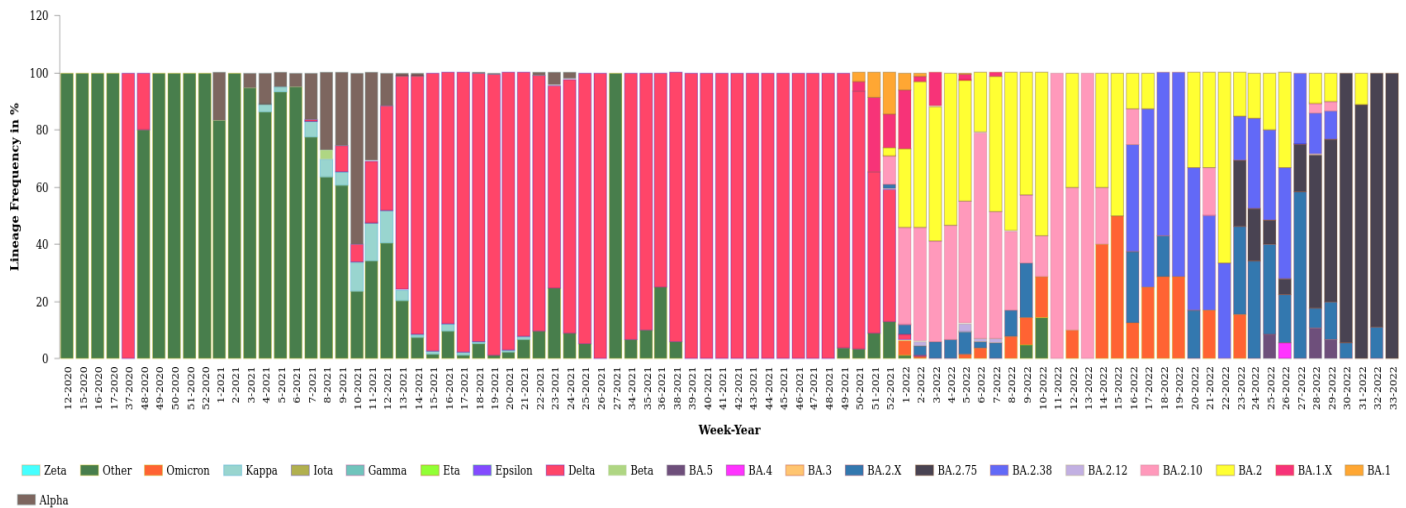
East India - Week wise lineage distribution

As on: 02-09-2022



Central India - Week wise lineage distribution

As on: 02-09-2022



*BA.5 in the graph includes its sub-lineages also.